

**BMW 3 Series**  
**Saloon**  
330i SE



**The Ultimate  
Driving Machine**



# The BMW 3 Series 330i Saloon

BMW  
Great Britain



## Introduction

### BMW 3 Series Saloon

Power. Refinement. Performance.  
We have developed powerful free-revving engines, extremely precise transmissions and a finely balanced chassis. But we didn't stop there. We also made sure that in the new BMW 3 Series, the thing that strikes you is not any one of these parts but the perfect integration of them.



## Design



### Introduction

Elegant yet uncomplicated - the new BMW 3 Series Saloon. The materials and the paint finishes have been carefully selected to complement the design of this car.

### Interior

The interior of the new BMW 3 Series has been designed with one thing in mind: your expectations.

The ergonomically designed seats, the optimally positioned dash and instrument panel, and high-quality colours and materials all ensure that no need is left unfulfilled.

### Interior space

More length, more width, more height – our developments go hand in hand with your expectations. The BMW 3 Series Saloon provides generous leg and shoulder room for increased passenger comfort. And there is plenty of room in the boot for an extra bag or two.

### Exterior

Twin headlamps gleam from behind clear lenses, the long, sweeping bonnet is slightly curved and the integrated rear spoiler ensures optimum air flow. Every detail of the new BMW 3 Series' silhouette underscores its unique sporting character.

## The BMW 3 Series 330i Saloon

BMW  
Great Britain



### Safety



#### Introduction

The new BMW 3 Series Saloon is fitted with a wide range of safety features including a high-strength bodyshell and an intelligent airbag system to provide optimum occupant protection.

#### High-strength bodyshell

The use of aluminium and high-strength steel ensures the extreme sturdiness of the BMW 3 Series bodyshell. And the virtually even distribution of its weight between the front and rear axles maximises steering responsiveness.

#### Airbag System

The BMW 3 Series comes with six standard and two optional airbags. The side head airbags, which cover the entire area of the side windows, offer splinterproof protection to shield the occupants from any loose objects. Crash sensors react immediately inflating the airbags to precisely the right degree.

#### Xenon headlights

Optional Xenon headlights provide optimum dipped and full-beam illumination of the road in all weather conditions and allow obstacles to be identified earlier compared with halogen headlights.

#### Run-flat tyres

The BMW 3 Series is fitted with Run-flat tyres as standard, rendering roadside tyre changes obsolete. If air pressure is lost, the tyre's strengthened sidewall allows you to drive to the nearest repair centre at a top speed of 50mph.

### Technology



#### Introduction

In the 3 Series Saloon, we have taken suspension technology to new levels of sophistication with an array of unique, interlinked systems that are designed to provide optimum directional control and ride comfort - even under the most adverse driving conditions.

#### Active Steering

When driving at reduced speeds or when parking, only two turns of the steering wheel are needed to move the front tyres lock to lock. At higher speeds, movement is smooth and precise, enhancing stability and driving comfort.

Whatever the driving situation, the optional Active Steering adjusts steering behaviour to deliver the right result reinforcing the sporting character of the BMW 3 Series.

#### Bodyshell and suspension

Once you are behind the wheel you can experience the optimum combination of supreme driving comfort and exhilarating sporting power that the suspension and dampers provide as you enter a corner.

The optional Sports Suspension lowers the vehicle 15mm and ensures additional sports car pleasure.

#### Aluminium chassis

A virtually even distribution of weight between the front and rear axles increases steering responsiveness. The light-weight aluminium front axle helps to maintain tracking while the new five-link rear suspension enhances the vehicle's outstanding agility and excellent handling.

#### Dynamic Stability Control

The BMW 3 Series feels most at home on sharp bends. When necessary, Dynamic Stability Control influences engine and brake system management to maximise vehicle stability. It also coordinates all other driver assistants leaving drivers free to explore their sporting ambitions.

## The BMW 3 Series 330i Saloon

BMW  
Great Britain



### Engines



### Introduction

The two petrol engines and the diesel engine available in the new 3 Series Saloon all have one thing in common: they combine outstanding performance with exceptional efficiency. Working in perfect harmony with the standard six-speed transmission these engines let their dynamics speak for themselves.

### Four and six-cylinder petrol engine

The engine provides powerful torque all the way up to 7,000 rpm with the aluminium and magnesium engine block helping to reduce the overall weight. 258 bhp propels the 330i from 0 to 62 mph in 6.3 seconds, while the 320i takes just 9.2 seconds.

### Four-cylinder diesel engine

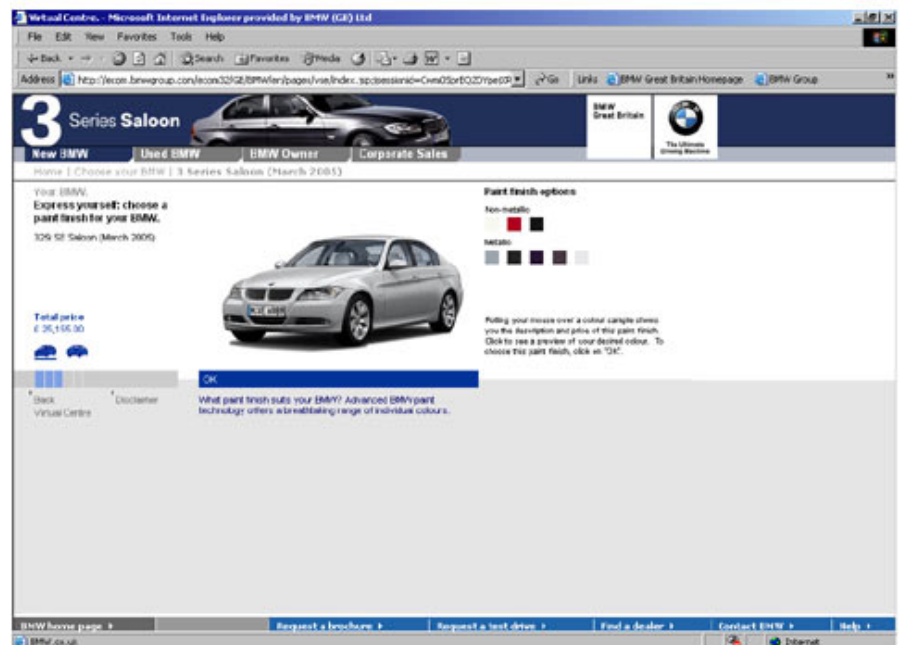
With injection pressure of up to 1,600 bar, only perfectly-measured doses of diesel are released into the combustion chamber enabling the Common Rail diesel engine to provide increased performance at notable quietness.

The BMW 320d reaches 62mph in 8.3 seconds and delivers maximum torque of 340Nm at 2,000 rpm.

### Build Your BMW

#### Build your BMW on-line

The BMW 3 Series Saloon is available in a wide choice of exterior colours, interiors upholstery and trims. In addition you can choose to personalise your car with a choice of optional equipment to suit your every need. To discover how to build your car to your own specification, spend a few minutes on-line and click on the 'Build your BMW' link to go through to the Car Configurator. You can then choose to either save this car for yourself or send it through to your preferred BMW Dealer to discuss further details. Go to [www.bmw.co.uk/3seriesaloon](http://www.bmw.co.uk/3seriesaloon).





## The BMW 3 Series 330i Saloon

BMW  
Great Britain



### Request a test drive

#### Request a test drive on-line

For your convenience, you can go on-line to [www.bmw.co.uk/3series/saloon](http://www.bmw.co.uk/3series/saloon) and request a test drive today.

Your enquiry will be sent to your preferred dealer on the same day and they will be able to deal with your request.

The screenshot shows a web browser window titled 'BMW Request - Microsoft Internet Explorer provided by BMW GB Ltd'. The address bar shows a URL from www.bmw.co.uk. The page has a header with the BMW logo and 'The Ultimate Driving Machine' slogan. Below the header is a navigation bar with links: 'New BMW', 'Used BMW', 'BMW Owner', and 'Corporate Sales'. The main content area is titled 'Test drive request' and 'Step 1: Request details and preferred dealer'. It contains a form with the following fields: 'Series\*' (dropdown menu showing '3 Series'), 'Bodystyle\*' (dropdown menu showing 'Saloon'), 'Model' (dropdown menu showing 'Please select'), 'Postcode\*' (text input field), and a 'Search' button. There is also a 'Please enter the details of your request here.' text area. At the bottom of the form are 'Clear' and 'Go to step 2: Personal details' buttons. The footer of the page includes links: 'BMW home page', 'Request a brochure', 'Request a test drive', 'Find a dealer', 'Contact BMW', and 'Help'.

### Independent road tests

#### Read an independent road test on-line

To enable you to gain a better view of the BMW 3 Series Saloon you can read independent road tests from motoring press such as Autocar and WhatCar? Magazines on our website [www.bmw.co.uk](http://www.bmw.co.uk).



# The BMW 3 Series 330i Saloon

BMW  
Great Britain



## Ownership benefits

### Introduction

BMW provide a range of vehicle services that allow easy management of your BMW in all circumstances. From Service While You Wait and Accident Management to Emergency Service and BMW Four Plus - the car care programme for BMWs over four years old - each service brings with it complete piece of mind and the knowledge that you and your car will be looked after by real experts. Find out how BMW Driver services can take the stress out of car ownership and what we can do to make your life that little bit simpler.



## Technical Specification 330i SE Saloon

**Note** - Figures in brackets represent Automatic transmission

### Engine

Cylinders/valves 6/4  
Capacity cml 2996  
Stroke/Bore (mm) 88/85  
Max output (kW/bhp/rpm) 190/258/6600  
Max torque (Nm/rpm) 300/2500

### Wheels

Tyre size front 225/45 R17  
Tyre size rear 225/45 R17  
Wheel size front 8J x 17  
Wheel size rear 8J x 17

### Fuel consumption

Urban (mpg) 22.2 (21.9)  
Extra-urban (mpg) 44.1 (41.5)  
Combined (mpg) 32.5 (31.4)  
Urban (ltr/100km) 12.7 (12.9)  
Extra-urban (ltr/100km) 6.4 (6.8)  
Combined (ltr/100km) 8.7 (9.0)  
CO2 emissions (g/km) 210 (216)  
Tank capacity (ltr) 60

### Dimensions

Wheelbase 2760  
Vehicle length 4520  
Vehicle width 1817  
Vehicle height 1421  
Track, front 1500  
Track, rear 1513

### Performance

Drag (cw) 0.3  
Top speed (mph) 155 (155)  
Acceleration 0-62 mph (sec) 6.3 (6.6)  
Acceleration 50-75 mph in 4th (sec) 6.5 ( - )

### Weight

Unladen (EU) 1525 (1540)  
Max permissible 1970 (1985)  
Permitted load 520  
Permitted axle load, front/rear 935/1085

## Equipment

Transmission	330i SE
Active Cruise Control	£1,210
Active Steering	£925
Cruise Control	—
Cruise Control with brake function	■
Power-assisted steering	■

■ Standard    £ Optional cost    — Not Available

# The BMW 3 Series 330i Saloon

BMW  
Great Britain



## Equipment

Transmission	330i SE
Six-speed automatic gearbox with Steptronic	£1,420
Six-Speed manual gearbox	■
Sports suspension settings	£200
Engine	
Catalytic converter	■
EU4 Emission standard	■
Four-cylinder in-line diesel engine with common rail technology	—
Four-cylinder in-line engine with four valve technology	—
Oxidising converter	—
Six-cylinder in-line petrol engine with four-valve technology	■
Valvetronic	■
Safety	
Adaptive Headlights (Only with Bi-Xenon headlights)	£695
Airbags - driver and front passenger, front side and ITS head airbags	■
Alarm system with remote control	■
Automatic seat belt tensioners for front seats	■
Bi-Xenon lights for low-beam and high-beam headlights	£415
Brake Force Display - two stage variable brake light activation	■
Cornering Brake Control (CBC)	■
Dynamic Brake Control (DBC)	■
Dynamic Stability Control (DSC)	■
Dynamic Traction Control (DTC)	■
Electronic Immobiliser	■
Fog lights, front	■
High-level third brake light	■
ISOFIX child seat fixings in rear	■
Park Distance Control (PDC) at the rear only	■
Park Distance Control (PDC), front and rear	£285
Rain sensors and automatic driving lights control	■
Run-flat tyres including run-flat indicator	■
Exterior	
Clear direction indicator lights	■
Climate comfort windscreen	£170
Electric door mirrors	■
Electric panoramic glass roof	£675
Exterior mirror package	£165
Exterior parts in body colour	■
Graduated windscreen (green stripe)	£50

■ Standard   £ Optional cost   — Not Available

# The BMW 3 Series 330i Saloon

BMW  
Great Britain



## Equipment

Exterior	330i SE
Headlight washing system	■
Heating exterior mirrors and windscreen washer jets	■
Individual sun protection glazing	£195
Matt titanium insert in front bumper valance	■
Metallic paintwork	■
Model designation	£0
Non-metallic paintwork	■
Ornamental front grille with vertical slats in black and chrome surround	■
Twin exhaust tail pipes	■
Wheels - 16-inch Steel wheels with aluminium look covers	—
Wheels - Light-alloy wheels double spoke 154	—
Wheels - Light-alloy wheels double spoke 156	—
Wheels - Light-alloy wheels double spoke 161	£285
Wheels - Light-alloy wheels ellipsoid spoke 162	£785
Wheels - Light-alloy wheels radial spoke 160	£75
Wheels - Light-alloy wheels star spoke 155	—
Wheels - Light-alloy wheels star spoke 158	■
Wheels - Light-alloy wheels star spoke 159	£75
Windscreen wipers with adjustable intermittent wipe	■
Interior	
"LIGHTS ON" warning	■
Air Conditioning, automatic	■
Air Conditioning, manual	■
Armrest at the front with storage box	■
Armrest front-sliding	£110
Automatic interior dimming rear-view mirror	■
Centre armrest at the rear	■
Check Control warning system	■
Comfort Access System	£430
Cupholders in the instrument panel above the glove compartment	■
Door sill finishers with BMW designation	■
Electric front and rear windows with one touch function	■
Floor mats in velour	£75
Headrests at the rear, for two outer seats, foldable and with manual height adjustment	■
Interior and exterior mirrors with automatic anti-dazzle function	£210
Interior rear-view mirror with automatic anti-dazzle function	■
Interior trim - Brushed Aluminium	£215
Interior Trim - Fine wood trim Poplar grain natural	£300
Interior Trim - Fine-wood trim Burr Walnut	£300

■ Standard   £ Optional cost   — Not Available



# The BMW 3 Series 330i Saloon

BMW  
Great Britain



## Equipment

Interior	330i SE
Interior trim finishers Titanium matt	■
Luggage-compartment package	£210
Navigation system - Professional, incl.8.8" colour monitor, BMW Professional radio and voice control	£1,970
Navigation system Business, incl BMW Business, LC display integrated radio unit	£1,585
On-board computer	■
Radio - BMW Professional radio with CD drive	■
Radio - MD player	£110
Radio/audio - Hi-Fi BMW 6 Disc CD Changer	£295
Radio/audio - Hi-Fi Professional LOGIC7 system	£820
Radio/audio - HiFi loudspeaker system	£390
Radio/audio - Loudspeaker system with six speakers	■
Remote control, universal, fully integrated	£165
Seat occupant detector for front passenger seat	■
Seats - seat adjustment, electric with memory function for driver's seat	£890
Seats/seat comfort - Lumbar support	£195
Seats/seat comfort - Seat heating (three stages) for driver and front passenger	£260
Seats/seat comfort - sports seats for driver and front passenger	£430
Smoker package	■
Starter button	■
Steering wheels - Leather sports steering wheel	£65
Steering wheels - Leather steering wheel	■
Steering wheels - Multi-function controls for steering wheel	■
Steering wheels - Steering column adjustment, manual, for reach and height	■
Storage compartment package	£80
Sunblind, electric, for rear window	£195
Sunblinds for rear side windows	£130
Sunvisors with vanity mirrors	■
Telephone - Bluetooth Telephone preparation (for further information visit <a href="http://www.bmw.co.uk/bluetooth">www.bmw.co.uk/bluetooth</a> )	£535
Through-loading system including ski-bag	£245
Toolkit located in luggage compartment	■
TV function	£710
Upholstery - Cloth 'Fluid'	■
Upholstery - Cloth/leather combination	£405
Upholstery - Dakota leather	£1,220
Visible VIN	■
Voice control system	£285
Warning triangle and first-aid kit	■

■ Standard   £ Optional cost   — Not Available

## The BMW 3 Series 330i Saloon

BMW  
Great Britain



### Pricing

Price shown as 'on the road'

330i SE      **£28,455**

### Company car tax

Car benefit charges for cars with an approved CO2 emissions figure

Model Description	CO2 Taxband	CO2 Emission
330i SE	28% (29%)	210.0 (216.0)

Company car tax information for automatic cars is shown in brackets.

BMW (GB) Ltd reserves the right to alter prices and specifications without notice. For precise information, please contact your BMW Dealer. Subject to change in design and equipment. Subject to error.